

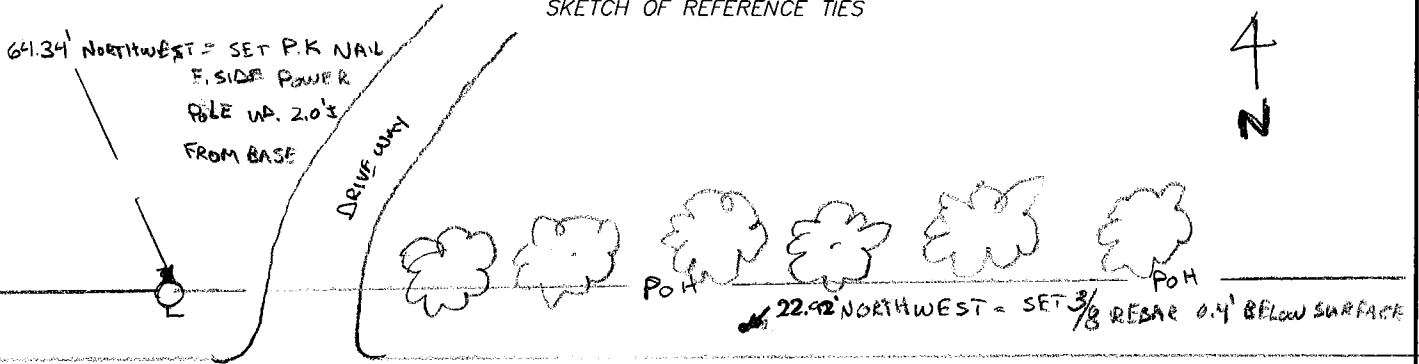
# CERTIFICATE OF LOCATION OF GOVERNMENT CORNER

NORTH QUARTER Corner of Section 33, Township 108 N, Range 43 W, 5<sup>th</sup> P.M.  
 STATE OF MINNESOTA, County of Murray

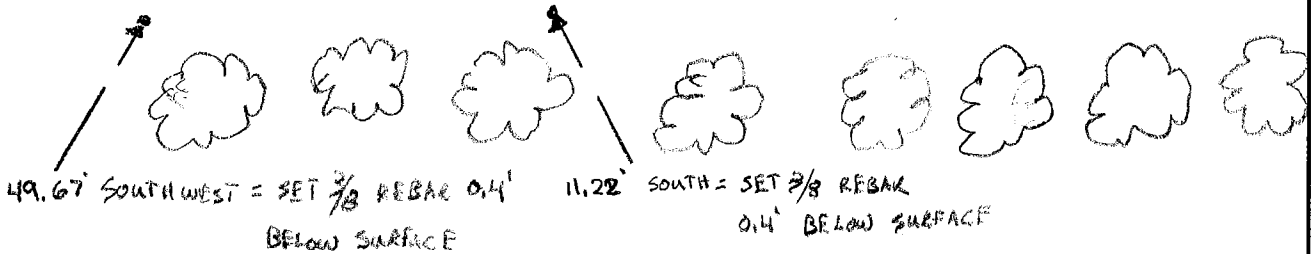
At the corner location shown on the sketch:

- On \_\_\_\_\_ found a \_\_\_\_\_  
DATE
- left monument as found,       lowered monument,       removed monument (explain)
- On 7/26/07 placed a 3/8 CAPPED REBAR # 40853 DOWN 0.4' BELOW SURFACE  
DATE

SKETCH OF REFERENCE TIES



191<sup>TH</sup> ST. GRAVEL



Statement of evidence relative to this corner location is on back of page.

I hereby certify that this document and the data contained herein was prepared by me or under my direct supervision.

SIGNATURE

Registration No. 40853

- Land Surveyor,       Professional Engineer  
 County Surveyor,       County Engineer

OFFICE OF THE COUNTY RECORDER  
 County of \_\_\_\_\_

I hereby certify that this document was filed in the Co. Records office at \_\_\_\_\_ M. on the \_\_\_\_\_ day of \_\_\_\_\_ A.D., 20\_\_\_\_

County Recorder \_\_\_\_\_

By \_\_\_\_\_, Deputy

DOCUMENT NO. \_\_\_\_\_

Statement of Evidence (N. ¼ cor. Sec. 33, Twp. 108, Rge. 43)

On July 26, 2007, Westwood Professional Services excavated with a backhoe and found no evidence. A 3/8 inch capped rebar was set (PLS 40853) 0.4 feet below grade midway and online from the northeast corner and the northwest corner of the section. The total measured distance from the northeast corner to the northwest corner was 5293.20 feet.